

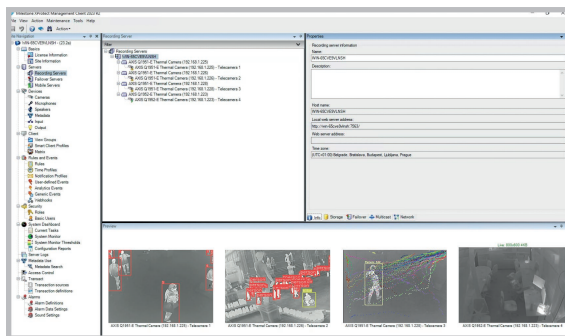


Snap4City integration with Milestone XProtect®, VMS, Video Management System

Milestone XProtect® is a popular video management software (VMS) solution offered by Milestone Systems. VMS software is used for managing, viewing, and recording video from surveillance cameras and other video sources.

Common features and capabilities in Milestone XProtect VMS includes:

- Camera Management from various manufacturers;
- Continuous or event-based Video Recording;
- Advanced Playback and Forensics;
- Scalability, from a small number of cameras or scale up to manage large-scale surveillance systems with thousands of cameras and multiple locations.
- Mobile Access;
- Integration with a variety of third-party systems and devices;
- User Management;
- Event and Alarm Management;
- Video analytics capabilities for advanced features;
- Centralized Management, for organizations with multiple sites or locations;
- Cybersecurity Features, to protect against unauthorized access and cyber threats;
- Failover and Redundancy, High availability and failover options to ensure continuous operation;
- User interface customization;
- Detailed logs and audit trails.



Keep in mind that the exact features and capabilities may vary depending on the specific edition or version of Milestone XProtect you choose, as well as any additional plugins or integrations you might use. To get the most accurate and up-to-date information about Milestone XProtect VMS, it is recommended to visit the official Milestone Systems website or contacting their sales and support teams.

Integrating Milestone VMS (Video Management Software) with Snap4City can offer several benefits for smart city and urban management:

- **Enhanced Security and Surveillance:** Integration of Milestone VMS with Snap4City allows for seamless video surveillance within the smart city infrastructure. This can enhance security and safety by providing real-time monitoring of critical areas, such as public spaces, transportation hubs, and government buildings.
- **Event Correlation:** By combining video data from Milestone VMS with data from various IoT sensors and devices in the Snap4City platform, you can correlate events and incidents. For example, video footage can be linked to sensor data to provide context in case of emergencies or incidents.
- **Data Visualization:** Snap4City offers advanced data visualization tools, and when integrated with Milestone VMS, it can display live video feeds alongside other data layers, such as environmental data, traffic flow information, and more. This helps city administrators make informed decisions.
- **Traffic Management:** The integration can assist in traffic management and optimization. Video feeds from traffic cameras can be analyzed to monitor traffic flow, detect congestion, and even provide real-time updates to commuters.
- **Emergency Response:** In case of emergencies, such as accidents, fires, or security breaches, the integration allows for faster response times by providing real-time video feeds and situational awareness to first responders and emergency services.
- **Data Analytics:** Snap4City's analytics capabilities can be extended to video data from Milestone VMS. This enables the identification of trends, patterns, and anomalies in video footage, contributing to more proactive decision-making.
- **Smart Parking:** Integration can help manage parking facilities more efficiently by using video analytics to monitor parking spaces, detect violations, and guide drivers to available parking spots.
- **Public Safety:** It can improve public safety by enabling the detection of incidents such as vandalism, accidents, or overcrowding in public spaces. This information can be used to deploy resources effectively.

**SNAP4CITY
INTEGRATION
WITH VIDEO
MANAGEMENT
SYSTEM**

**SMART
APPLICATION
TO MONITOR
AND CONTROL
SURVEILLANCE
CAMERAS**

-

-

An abstract graphic design featuring a blue background with white geometric shapes, including triangles and lines, forming a stylized, layered structure. The design is composed of several horizontal bands of white triangles and lines, creating a sense of depth and movement. The overall effect is a modern, minimalist aesthetic.

-

