

# MOST@EXPO Osaka: From Research to Business

*Auditorium Padiglione Italia*

*April 20, 2025*

*OPTIFaaS*

*AI-Powered Digital Twin Platform  
for Mobility & Transport Operation and Plan*



# The Core

Snap4City / OPTIFaaS delivers mobility solutions for operational management and strategic-tactical planning through an integrated Digital Twin and various AI models, enabling what-if analysis, simulation, and optimization

## Objectives



Decongestion



Safety



Accessibility



Cost Reduction



Decarbonization

**OPTIFaaS**



Scalable, flexible, customized mobility solutions

Supports various urban contexts from small communities to large metropolises



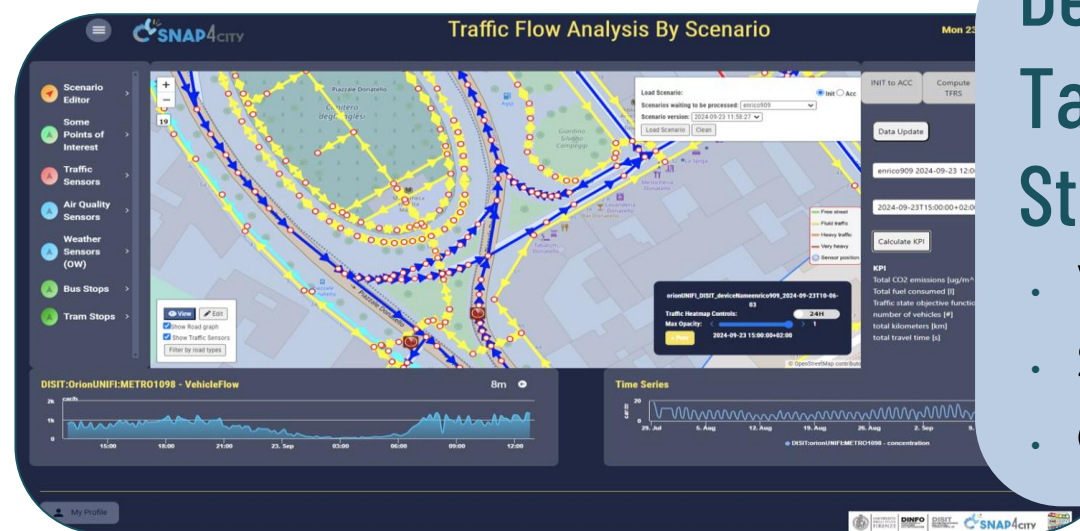
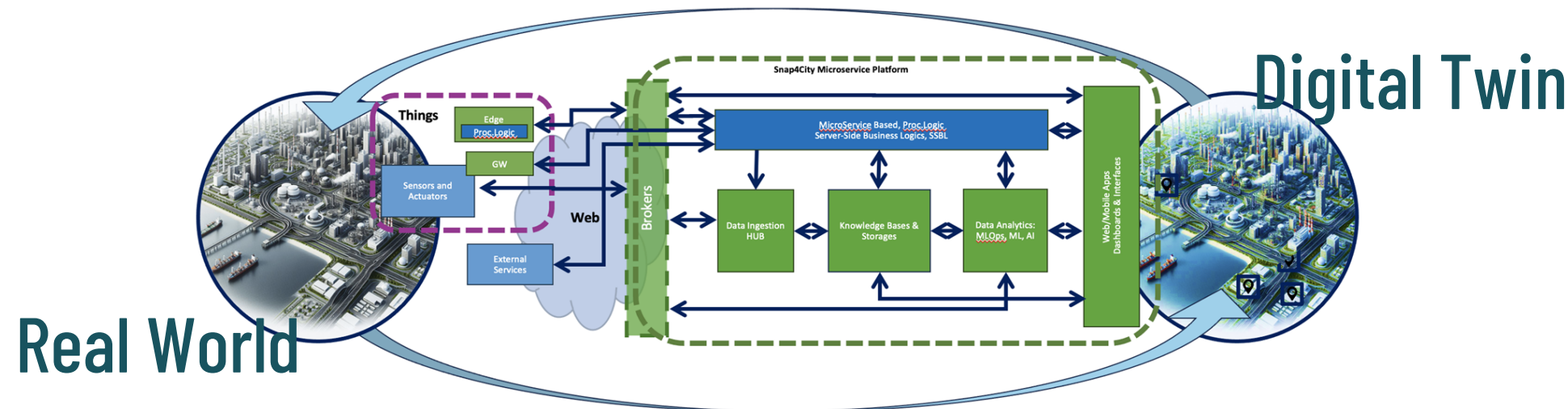
## AI-POWERED DIGITAL TWIN PLATFORM FOR MOBILITY & TRANSPORT OPERATION AND PLAN

Smart & Sustainable Mobility with Snap4City / OPTIFaaS  
Empowering Cities with AI based Digital Twin

Integrated Digital Twin + Artificial Intelligence platform for real-time urban mobility monitoring and optimization

### AI Technologies

- Deep Learning
- Reinforcement Learning
- Generative AI
- GNN-DRL and similar



### Designed for Tactic and Strategic Planning

- What-if scenarios
- Simulations
- Optimizations

### Supports Operational Management

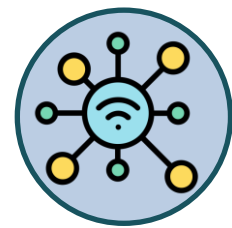
- Traffic monitoring, forecasting, and reconstruction
- Infrastructure evaluation
- Traffic light plan generation
- Early warning systems
- Dynamic/multimodal routing
- Analysis of city users' behavior

## AI-POWERED DIGITAL TWIN PLATFORM FOR MOBILITY & TRANSPORT OPERATION AND PLAN



### Snap4City

Is an **open platform** designed to support cities and organizations in enhancing urban mobility through the integration of **heterogeneous data sources** and **AI**



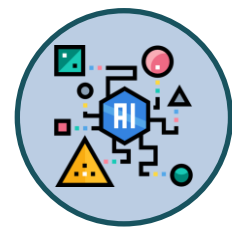
#### Open

open source, interoperable, modular, microservices



#### Scalable

with city size and complexity



#### AI-powered platform

data-driven platform for mobility innovation



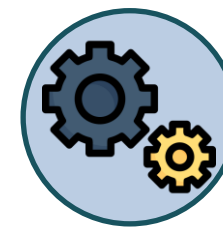
#### Optimizing Transportation Systems

improving efficiency, sustainability, quality of life



#### Business Intelligence Tools

available for decision makers, operators, control rooms



#### Minimal Set up Costs

maximum flexibility, visual programming, no-code platform

### Platform Value & Business Model

Scalable Solutions for Smart City Growth

### OPTIFaaS

Adopts a **service-based business model** tailored to the **needs of small and medium-sized cities and mobility operators**. It emphasizes cost-effectiveness, offering flexible and scalable solutions for urban mobility and sustainability



# AI-POWERED DIGITAL TWIN PLATFORM FOR MOBILITY & TRANSPORT OPERATION AND PLAN



## Sustainability & Social Benefits

Driving the Future: Smarter. Greener. Together.

“ Snap4City / OPTIFaaS promotes efficient and safe urban mobility, contributing to an improved quality of life and the sustainable growth of the community ”

## Social Impact

Reduced travel times and emissions

Accessibility and inclusivity

Road safety

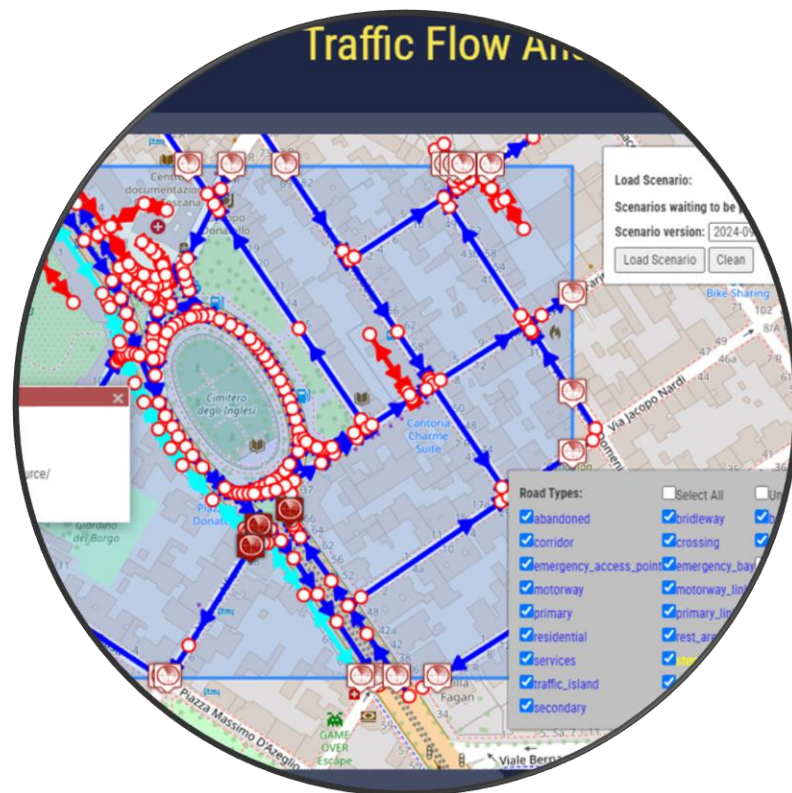
## Sustainability Features

Traffic optimization

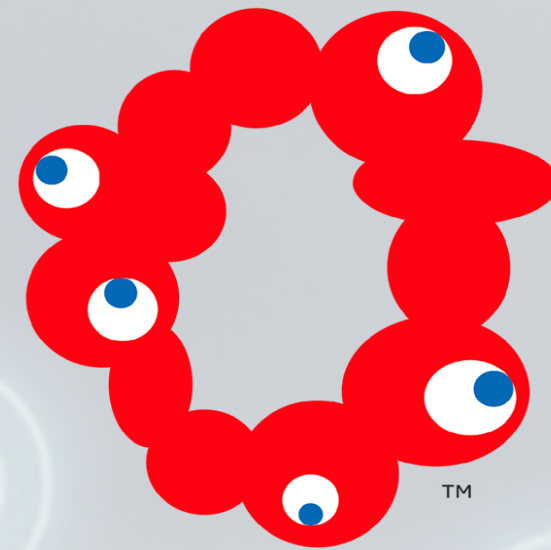
Multimodal transport integration

Data-driven simulation and what-if analysis

Fuel consumption reduction







OSAKA, KANSAI, JAPAN

**EXPO**  
**2025**



**SNAP4CITY**

[www.snap4city.org](http://www.snap4city.org)

[snap4city@disit.org](mailto:snap4city@disit.org)

**OPTIFaaS**

**AI-POWERED DIGITAL TWIN PLATFORM FOR MOBILITY & TRANSPORT OPERATION AND PLAN**