

Snap4City: Smart City IOT/IOE Platform

scalable Smart aNalytic APplication builder for sentient Cities

<https://www.snap4City.org>


<https://www.Km4City.org>

Nicola Mitolo

nicola.mitolo@unifi.it

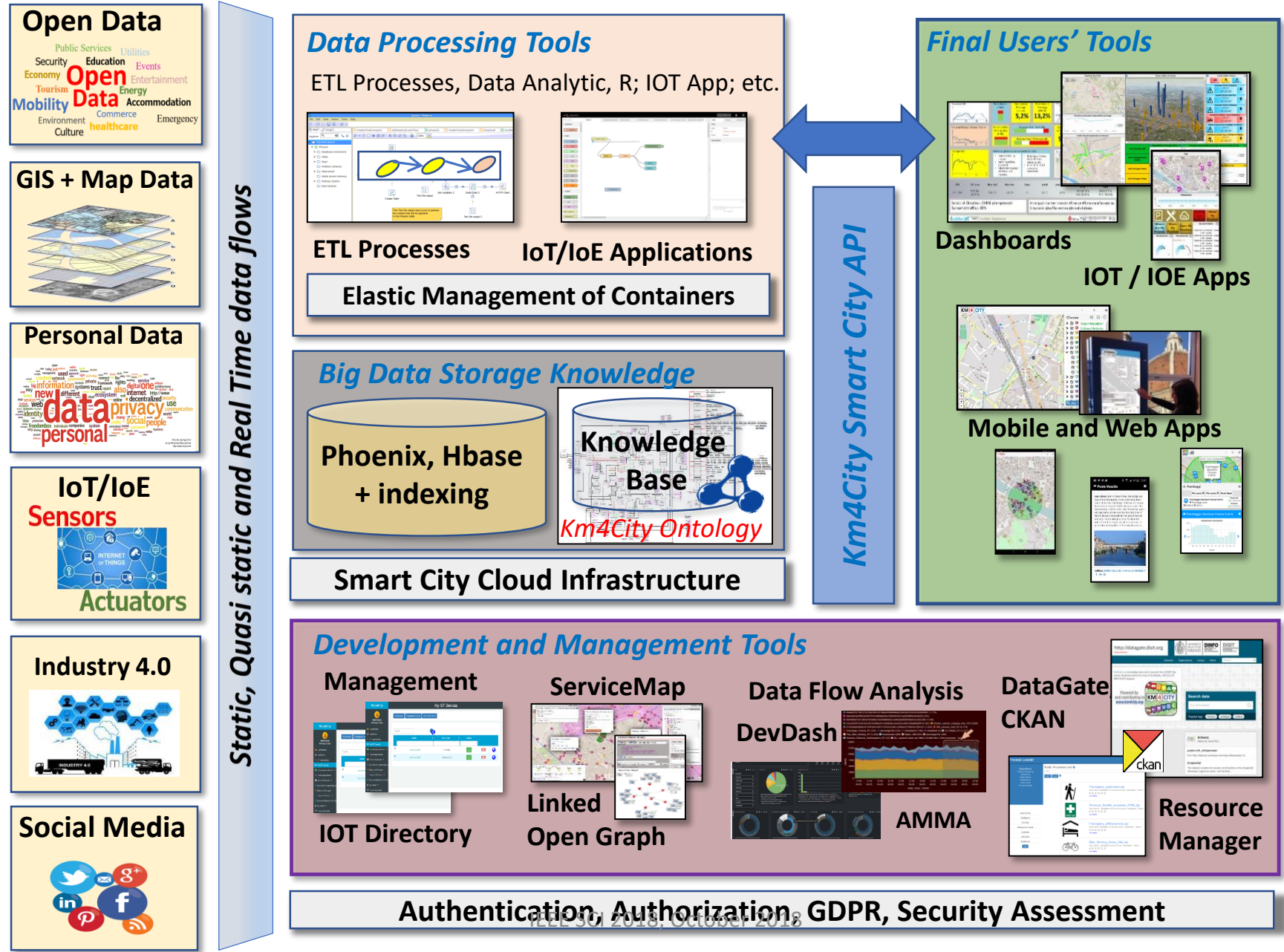
<https://www.disit.org/>



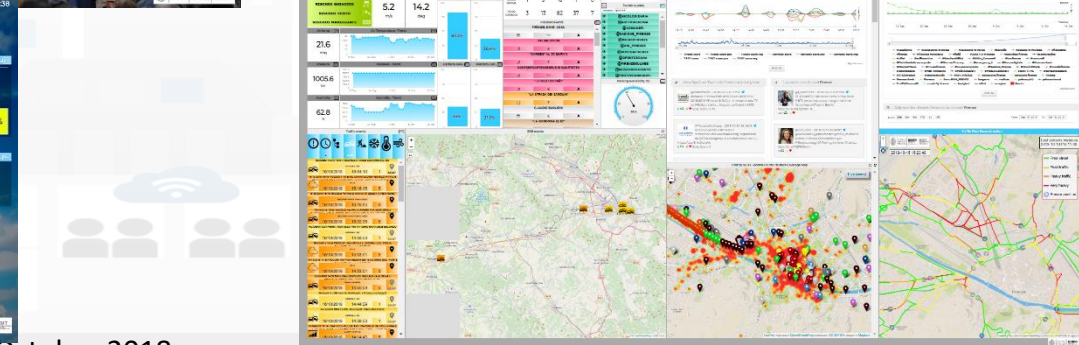
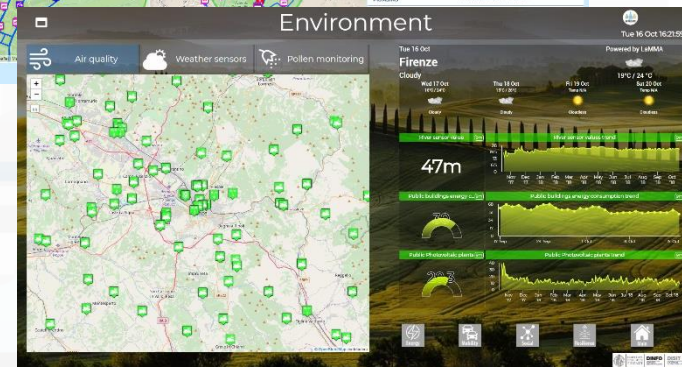
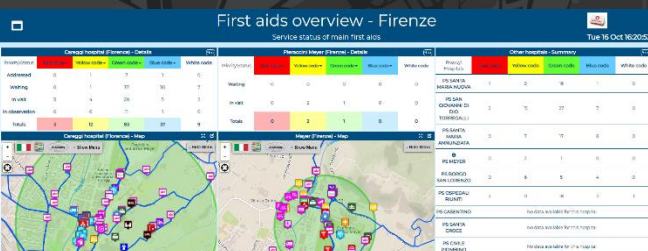
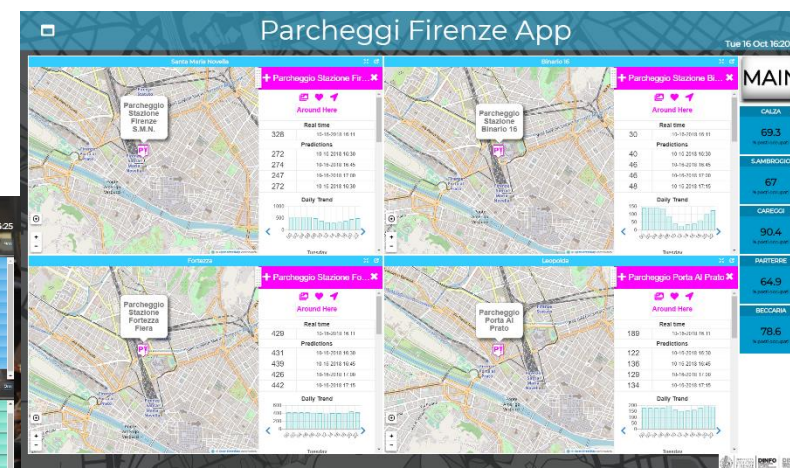
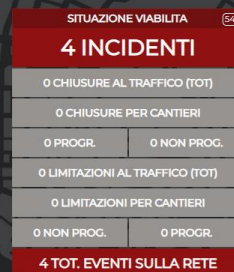
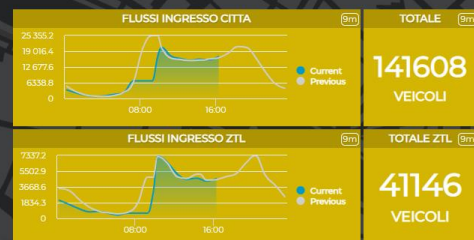
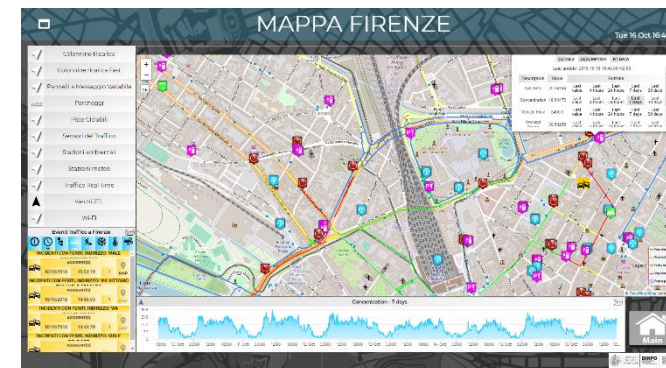
- **Snap4City has been created in response to Select4Cities PCP** (<http://www.select4cities.eu/>) call as an open, standardized, data-driven, service-oriented, user-centric platform enabling large-scale co-creation IOT/IOE applications and services for Helsinki, Copenhagen and Antwerp.
- **Snap4City is 100% open source:**
 - robust, scalable, easy to use solution, provides tools for co-creation of mixt data driven, stream and batch processing, GDPR, and city dashboards.
 - extending with IOT/IOE the semantic reasoner of Km4City
<https://www.km4city.org>
- The innovation is mainly related to semantic reasoning, IOT interoperability, microservices, automated dashboard production, .. thus
- *setting up smart city solutions in a*  **SNAP**

Requirements and Objectives

- Serve as a **City Dashboard, App User Interface**, etc.
 - Real time and historical data, any device, sensors and actuators
 - Sensors, KPI, maps, data trends, real time data, charts, etc.
- Referral / **historical data, and Open Data**:
 - shadow, access (API, storage, any protocol), production of OD, export
- **Data Driven Real Time communication & processing**:
 - IOT Applications, IOT edge, multiple operating systems, embedded systems, **MicroServices**
 - in/out data driven from/to the field into: applications, notifications, etc.
- **Data Analytics**: Machine Learning, statistics, reasoning, ...
- **Serve as Living Lab**: open innovation, coworking; collaborative work; sharing: data, processes, dashboard, experiences, solutions,
- Experimented on **large scale cases**



Tue 16 Oct 16:18:39





FIRENZE



Tue 16 Oct 16:18:39

INDICI DI CRITICITA' DELLA QUALITA' DELL'ARIA (ICQA)

2

inviata comunicazione alla cittadinanza

OZONO

200 μ/m^3

superata la soglia di informazione

39492 Utenti WiFi

STATI DI ALLERTA 9m

GENERAL METEO

MINIMO BASSO MEDIO ALTO

RISCHIO IDRAULICO

RISCHIO TEMPORALI

RISCHIO IDROGEOLOGICO

RISCHIO NEVE

RISCHIO GHIACCIO

Mar 16 Ott
Firenze

Nuvoloso
19°C / 24 °C
Powered by LAMMA

Mer 17 Ott
16°C / 24°C
Nuvoloso

Gio 18 Ott
15°C / 26°C
Nuvoloso

Ven 19 Ott
Temp N/A
Sereni

Sab 20 Ott
Temp N/A
Sereni

TPL

N **14 57 21**

3' 2' 8' 0' 5' 2'

COLONNINE RICARICA 9m

180 INSTALLATE

81.1 % ATTIVE

8.9 % IN USO

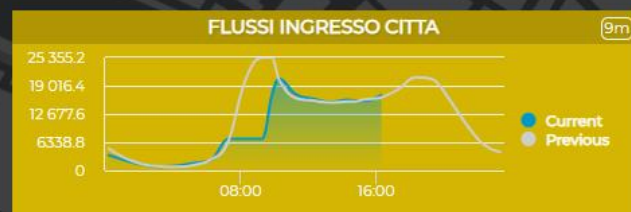
EUROPEAN UNION
COMUNE DI FIRENZE
DISIT
DIGITAL INNOVATION STUDY INSTITUTE

REPLICATE

FLORENCE DASHBOARD

This dashboard is the main entry point to access dashboards realised in the REPLICATE H2020 EC project.

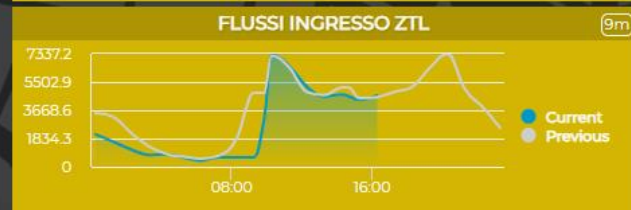
REPLICATE has received funding from the European Union's Horizon 2020 Research and Innovation Programme under grant agreement No. 691735.



TOTALE 9m

141608

VEICOLI



TOTALE ZTL 9m

41146

VEICOLI

SITUAZIONE VIABILITA 54s

4 INCIDENTI

0 CHIUSURE AL TRAFFICO (TOT)

0 CHIUSURE PER CANTIERI

0 PROGR. 0 NON PROG.

0 LIMITAZIONI AL TRAFFICO (TOT)

0 LIMITAZIONI PER CANTIERI

0 NON PROG. 0 PROGR.

4 TOT. EVENTI SULLA RETE

SMN 9m 63.4 % occupati su 901 posti	BINARIO16 9m 83 % occupati su 165 posti	FORTEZZA 9m 17.9 % occupati su 521 posti
LEOPOLDA 9m 36.3 % occupati su 300 posti	CALZA 9m 69.3 % occupati su 218	S.AMBROGIO 9m 67 % occupati su 379 posti
PARTERRE 9m 64.9 % occupati su 106 posti	CAREGGI 9m 90.4 % occupati su 406 posti	BECCARIA 9m 78.6 % occupati su 230 posti

STATO TRIAGE CAREGGI 9m

Red code Yellow code Green code Blue code White code

3 12 83 37 9

PM10

26

superamenti/anno

Riciclo rifiuto

56%

Rifiuto per abitante

0,629

t/pers/anno

PIL residenti

23.606

euro/pers

Tasso di disoccupazione

6,8%

Piste Ciclabili

19.7%

km ciclabili/km totali

MAPPA

Energy Environment

Mobility Social

Resilience



Environment



Tue 16 Oct 16:21:59



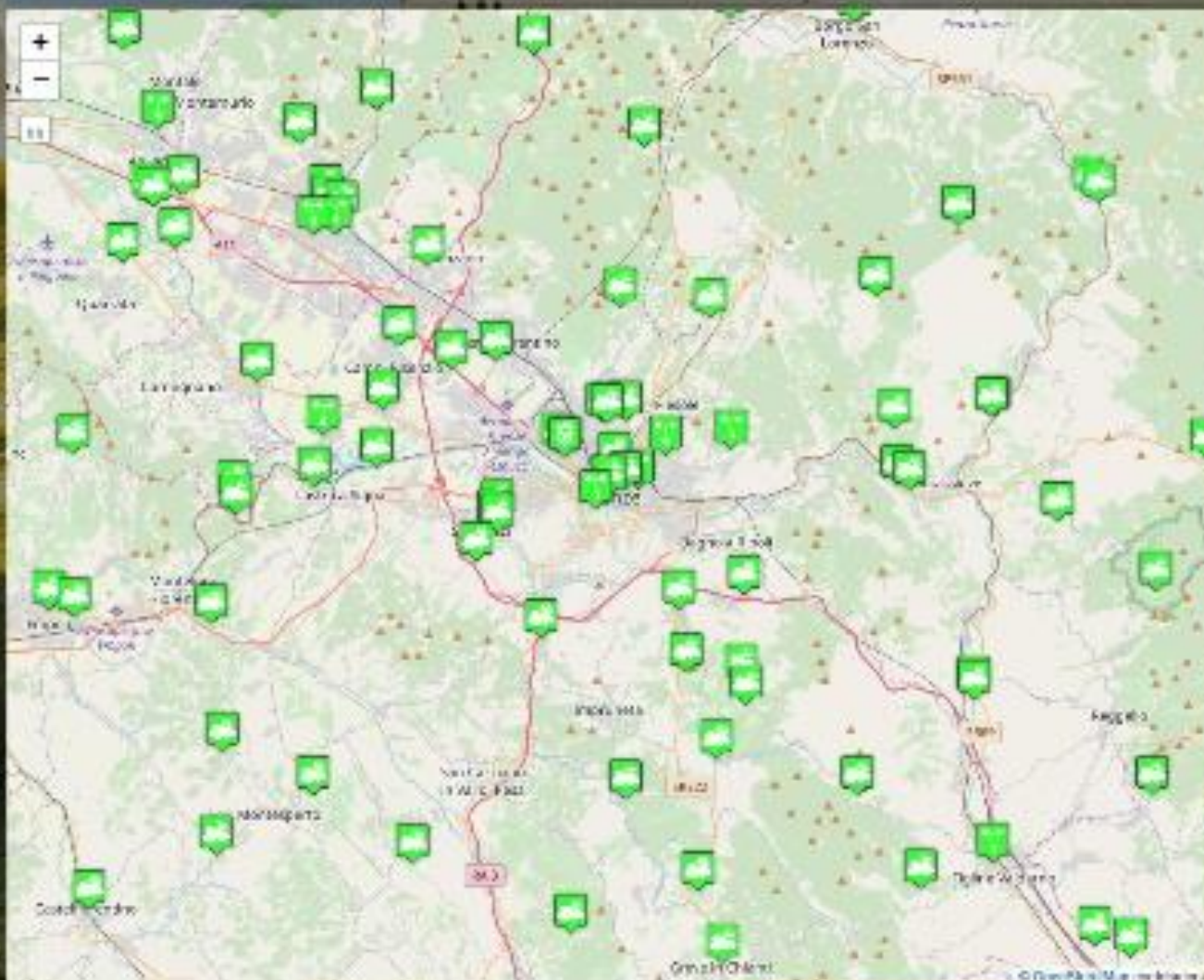
Air quality



Weather sensors



Pollen monitoring



Tue 16 Oct

Firenze

Cloudy

Powered by LaMMA



19°C / 24 °C

Wed 17 Oct

16°C / 24°C

Cloudy

Thu 18 Oct

15°C / 20°C

Cloudy

Fri 19 Oct

Temp NA

Cloudless

Sat 20 Oct

Temp NA

Cloudless

River sensor value

5m

47m

River sensor values trend

5m



Public buildings energy

5m

Public buildings energy consumption trend

5m



Public Photovoltaic plants

5m

Public Photovoltaic plants trend

5m





Energy Dash

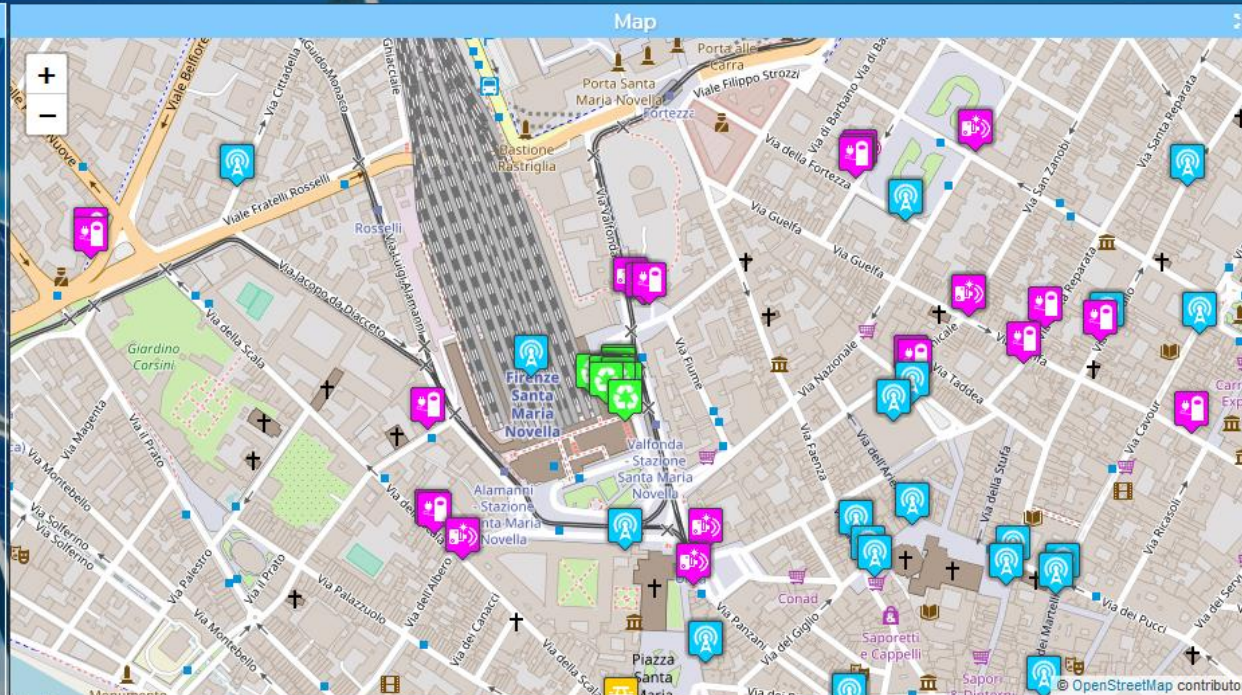
Pilot dashboard



Sun 8 Jul 11:59:06

Selector - Click the icon

- Fast recharging stations
- Florence WiFi POI
- Normal recharging stations
- Smart Benches
- Smart waste
- ZTL gate



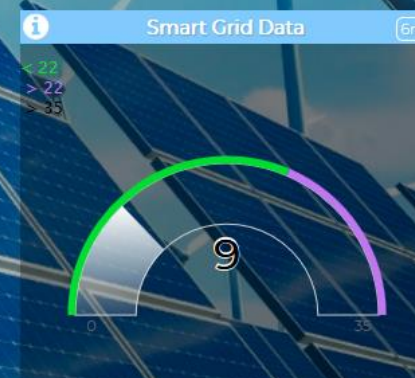
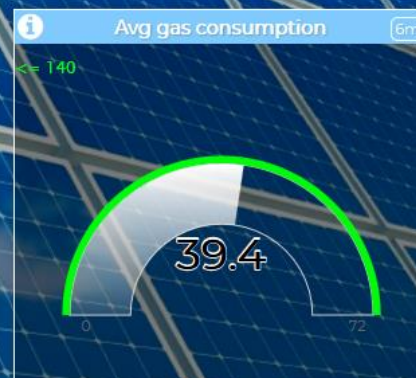
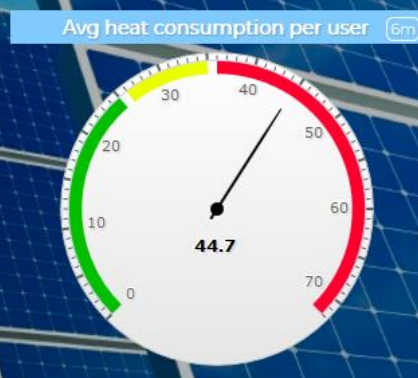
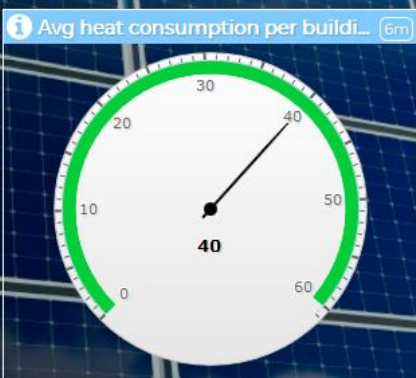
Real time ac... **Accumulato...** **Accumulato...**

87.5% **61.5%** **57.4%**

N. of App Users **Energy consumption vi...**

40 **122770**

users kWh



Web site status

SNAP4CITY

TOKEN FOUND

2018-07-08 11:51:37



MAPPA FIRENZE

Tue 16 Oct 16:46:17

- ✓ Colonnine Ricarica
- ✓ Colonnine ricarica Fast
- ✓ Pannelli a Messaggio Variabile
- Parco
- ✓ Parcheggi
- ✓ Piste Ciclabili
- ✓ Sensori del Traffico
- ✓ Stazioni ambientali
- ✓ Stazioni meteo
- ✓ Traffico Real time
- ▲ Varchi ZTL
- ✓ Wi-Fi

Eventi Traffico a Firenze (km)

INCIDENTI CON FERITI, INDIRIZZO: VIALE

accidenti(s)

15/10/2018 15:54:19 1 MAP

INCIDENTI CON FERITI, INDIRIZZO: VIA VITTORIO

accidenti(s)

15/10/2018 14:55:05 7 MAP

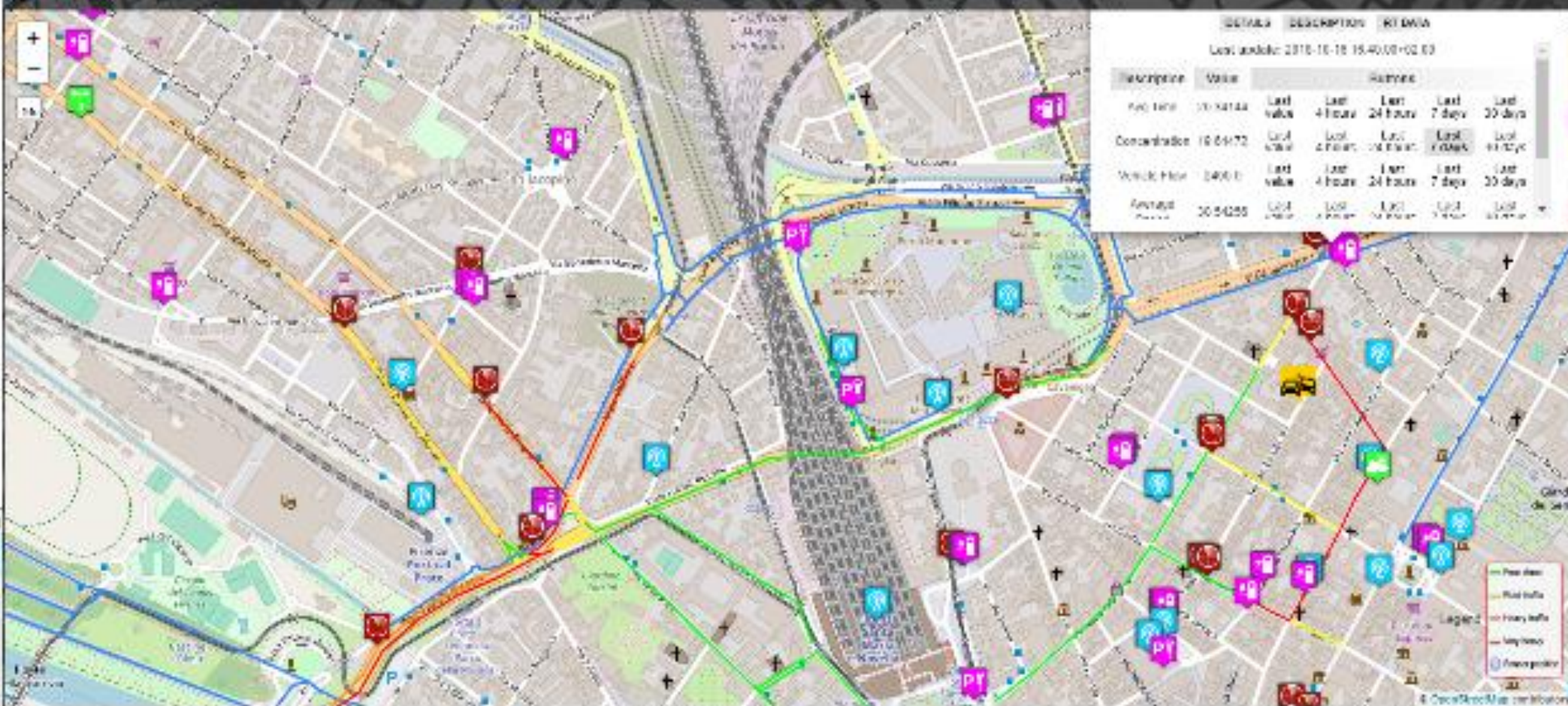
INCIDENTI CON FERITI, INDIRIZZO: VIA

accidenti(s)

15/10/2018 14:44:29 1 MAP

INCIDENTI CON FERITI, INDIRIZZO: VIA F

accidenti(s)



DATUM	DESCRIPTION	RT DATA
Last update: 2018-10-16 15:40:00+02:00		
Measurement	Value	History
Acc. Lane	10.14144	Last value Last 4 hours Last 24 hours Last 7 days Last 30 days
Concentration	10.04172	Last value Last 4 hours Last 24 hours Last 7 days Last 30 days
Vehicle Flow	1405.0	Last value Last 4 hours Last 24 hours Last 7 days Last 30 days
Forecast	10.54225	Last value Last 4 hours Last 24 hours Last 7 days Last 30 days





First aids overview - Firenze

Service status of main first aids

Tue 16 Oct 16:20:53

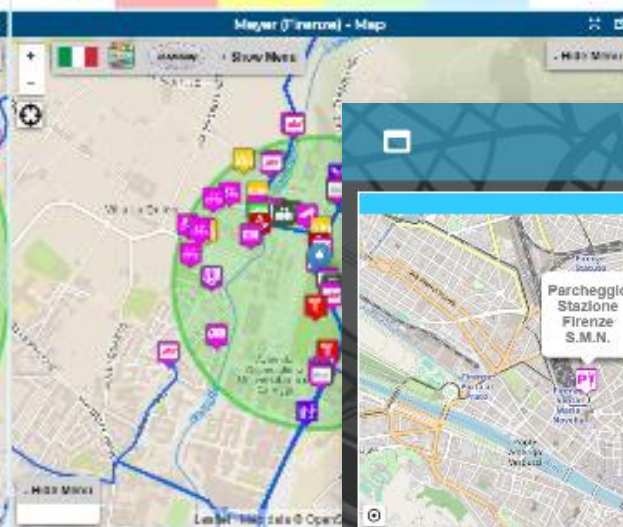
AP4city



Careggi hospital (Firenze) - Details					
Priority/Status	Red code	Yellow code	Green code	Blue code	White code
Addressed	0	1	7	1	0
Waiting	0	1	37	30	7
In visit	3	4	28	5	3
In observation	0	0	7	1	0
Totals	3	12	85	37	9

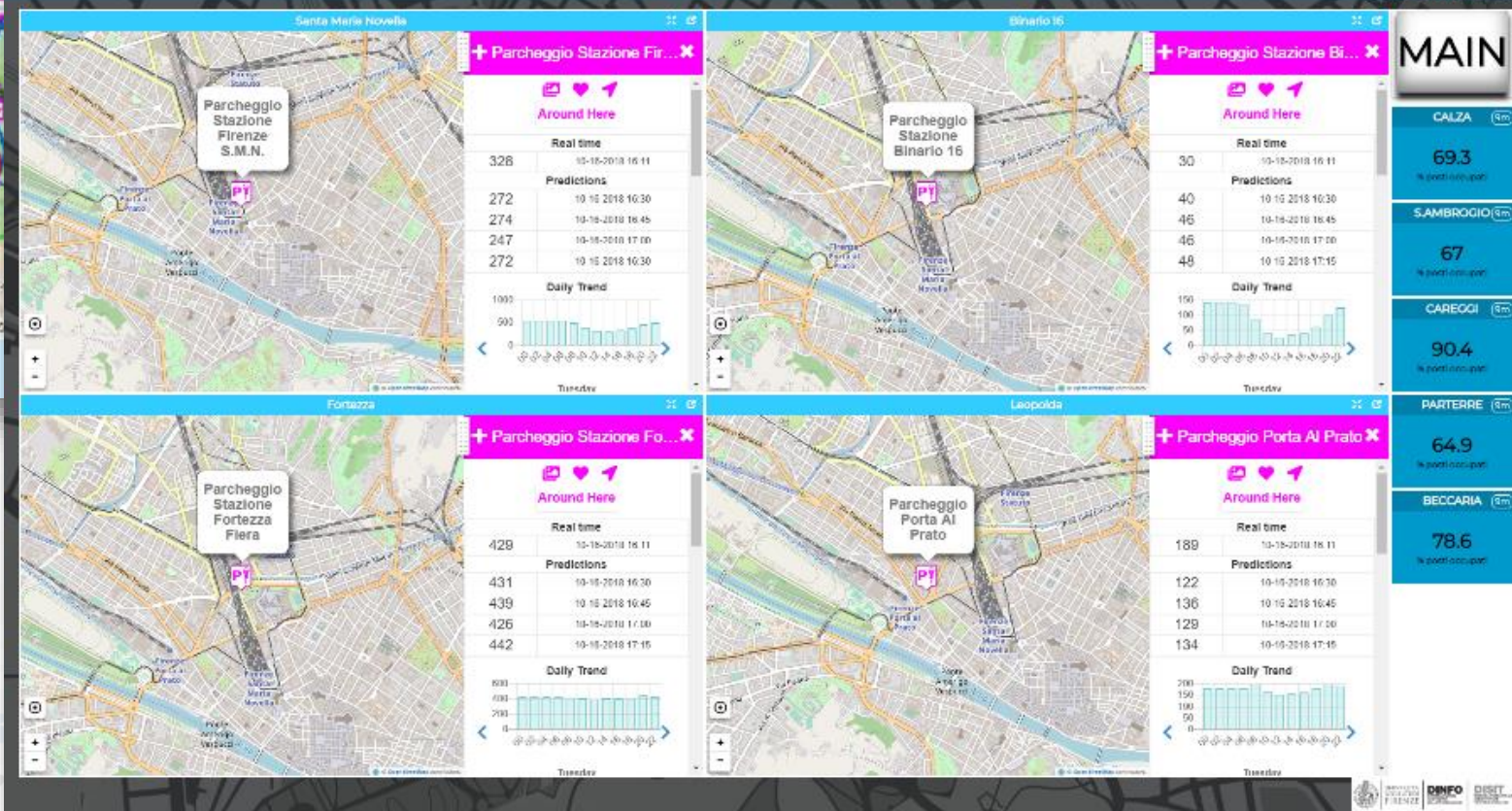
Pieraccini Meyer (Firenze) - Details					
Priority/Status	Red code	Yellow code	Green code	Blue code	White code
Waiting	0	0	0	0	0
In visit	0	2	1	0	0
Totals	0	2	1	0	0

Other hospitals - Summary					
Priority/Status	Red code	Yellow code	Green code	Blue code	White code
PS SANTA MARIA NUOVA	1	0	16	1	0
PS SAN GIOVANNI DI DIO TORREGALLI	2	15	27	7	0
PS SANTA MARIA ANNUNZIATA	0	7	17	6	0
PS MEYER	0	2	1	0	0

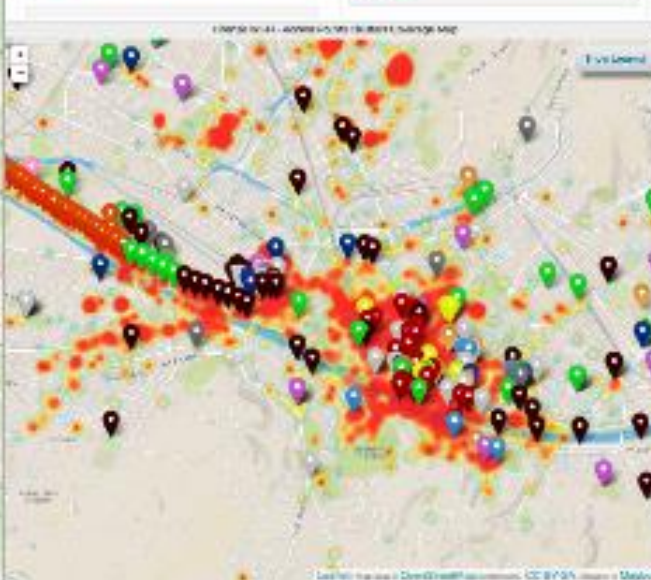


Parcheggi Firenze App

Tue 16 Oct 16:20:26



Tue 16 Oct 16:23:45



- Nascondi Menu

Fermate Firenze Comuni in Toscana Ricerca Testuale

Seleziona una provincia:
FIRENZE

Seleziona un comune:
FIRENZE

Actual Selection
COMUNE di FIRENZE

KM4CITY

Previs
Giovedì Venerdì Sabato
poco nuvoloso 23°C / 27°C
pioggia deboli e schiarite 20°C / 33°C
poco nuvoloso /
velato /

What is enabling and providing smart services

- Smart Parking, in Tuscany
- Smart First Aid in Tuscany
- Smart search for POI and public transport srv.
- Public Transportation in Tuscany
- Routing in Tuscany, simple and multimodal
- Social Media Monitoring and acting
- Traffic events and Resilience in Florence
- Bike Sharing in Pisa and Siena
- Recharge stations for e-vehicles
- Entertainment Events in Florence
- Traffic Sensors in Tuscany
- IOT/IOE sensors and actuators
- Weather forecast/condition in Tuscany
- Pollution and Pollination in Tuscany
- People Monitoring, in Tuscany via App
- ..People Monitoring Assessment in the City, in Florence via Wi-Fi

All Point of Interests, cultural activities, IOT, ...
Over than 1.2 Million of complex events per day!

- Nascondi Menu

Servizi Regolari Servizi Trasversali

search text into service

Categorie Servizi

- ☒ De/Select All
- ☒ Accommodation +
- ☒ Advertising +
- ☒ AgricultureAndLivestock +
- ☒ CivilAndEdilEngineering +
- ☒ CulturalActivity +
- ☒ EducationAndResearch +
- ☒ Emergency +
- ☒ Entertainment +
- ☒ Environment +
- ☒ FinancialService +
- ☒ GovernmentOffice +
- ☒ HealthCare +
- ☒ IndustryAndManufacturing +
- ☒ MiningAndQuarrying +
- ☒ ShoppingAndService +
- ☒ TourismService +
- ☒ TransferServiceAndRenting +
- ☒ UtilitiesAndSupply +
- ☒ Wholesale +
- ☒ WineAndFood +

N. risultati: Nessun Limite

Raggio ricerca 100 metri

Risultati della ricerca

più di 4000 risultati, attivato clustering

Services 16858

Level 4 users: dashboard with intelligence App

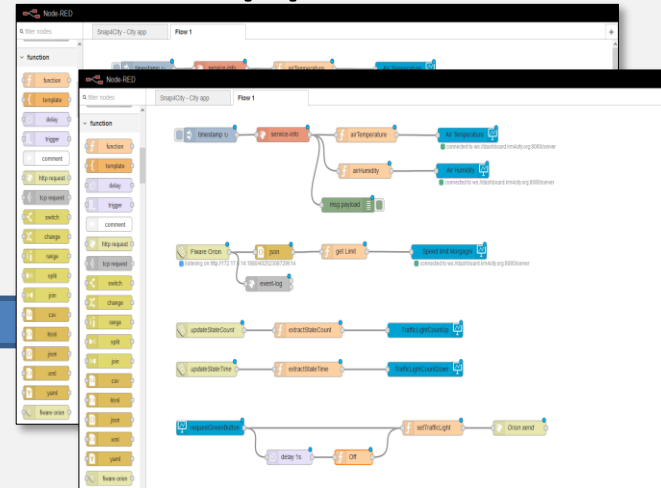
- Dashboards with IOT Applications for enforcing smart and intelligence into them.

Dashboard-IOT App

IOT and City data World



IOT Applications



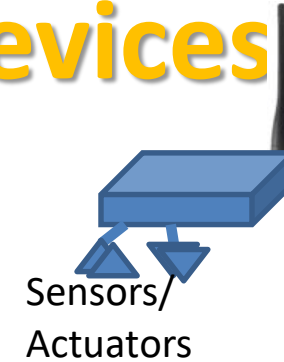
Dashboards



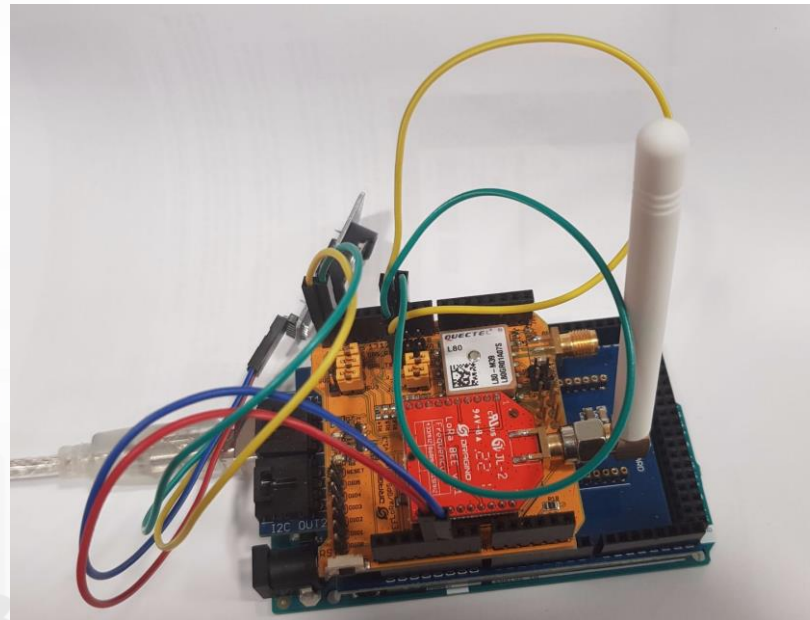
Applications

Custom IOT Edge, and IOT Devices

SigFOX
Arduino



LoraWAN + Arduino + I2C



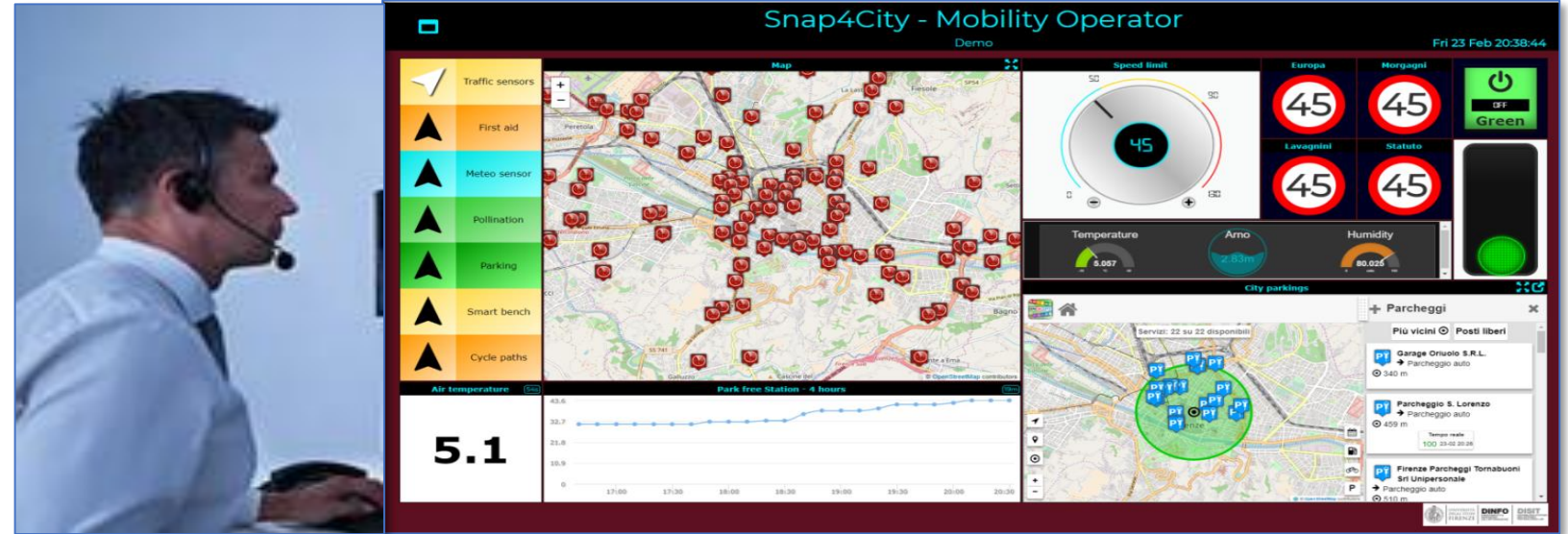
IOT Edge NodeRED:
Raspberry



Control Room Operator

Would like to:

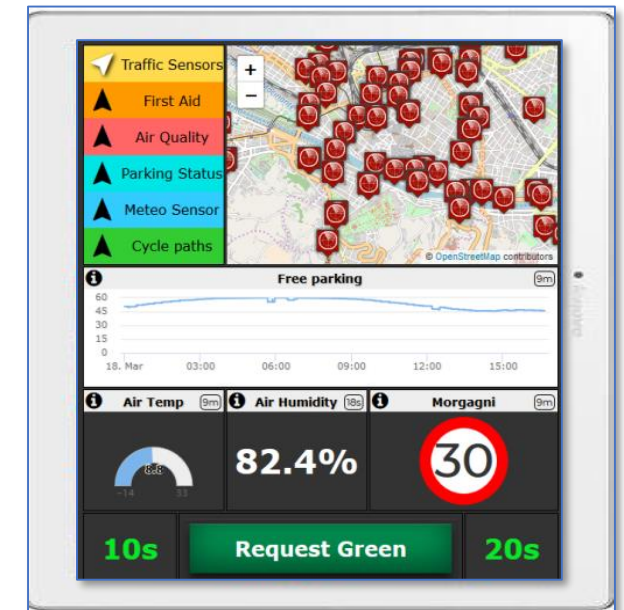
- **Monitor** traffic flow, Environment, Car parking, Cycling, First aid, temp., ..
- **Act and** monitor Dynamic Plates
- **Act and** monitor red lights



Driver, Policeman

Would like to:

- Monitor traffic, Parking, env., speed limit, ...
- **Act and** monitor red lights



**Present data on
Tuscany Region
August 2017**



- Nascondi Menu

Previs
Giovedi
Venerdi
Sabato
poco nuvoloso
23°C / 27°C
poco nuvoloso
20°C / 33°C
poco nuvoloso
/
schiarite
20°C / 20°C
velato
/

Road Graph (Tuscany region)

132,923 Roads

389,711 Road Elements

318,160 Road Nodes

1,508,207 Street Numbers

Info on: points, paths, areas, etc.

Services (20 cat, 512 cat.)

16 Public Transport Operators

21.280 Bus stops & 1081 bus lines

Dynamic/real-time in Tuscany Region

- Real time bus lines: 144 updates X day X line
- 1081 Transport Pub Lines: 1-2 up per day, time-path
- >210 parking lots status: 76 updates X day X sensor
- >796 traffic Sensors: 288 updates X day X sensor
- 285 weather area: 2 updates X day X area
- >12 hospital Triage status: 96 updates X day X FA
- 1600 Fuel stations: 1 update X day X station
- 22 Environmental data: 20 updates X day X sensor
- 39 Bike Sharing data: Pisa and Siena
- 12 Pollination data
- 140 recharging stations
- Smart benches, waste mng, irrigators, lighting,...
- Florence ent.events: about 60 new events X day
- Different kinds of Florence traffic events,
- Wi-Fi: > 400.000 measures X day
- App mobiles: >50.000 measures X day
- more than 40.000 distinct users X day
- From 600.000 to 4.5 M Tweets X day
- many IOT

EUROCITIES KSF 2018, October 2018

- Nascondi Menu

Servizi Regolari Servizi Trasversali

search text into service

Categorie Servizi

- ☒ De/Select All
- ☒ Accommodation +
- ☒ Advertising +
- ☒ AgricultureAndLivestock +
- ☒ CivilAndEdilEngineering +
- ☒ CulturalActivity +
- ☒ EducationAndResearch +
- ☒ Emergency +
- ☒ Entertainment +
- ☒ Environment +
- ☒ FinancialService +
- ☒ GovernmentOffice +
- ☒ HealthCare +
- ☒ IndustryAndManufacturing +
- ☒ MiningAndQuarrying +
- ☒ ShoppingAndService +
- ☒ TourismService +
- ☒ TransferServiceAndRenting +
- ☒ UtilitiesAndSupply +
- ☒ Wholesale +
- ☒ WineAndFood +

N. risultati: Nessun Limite

Raggio ricerca 100 metri



Risultati della ricerca

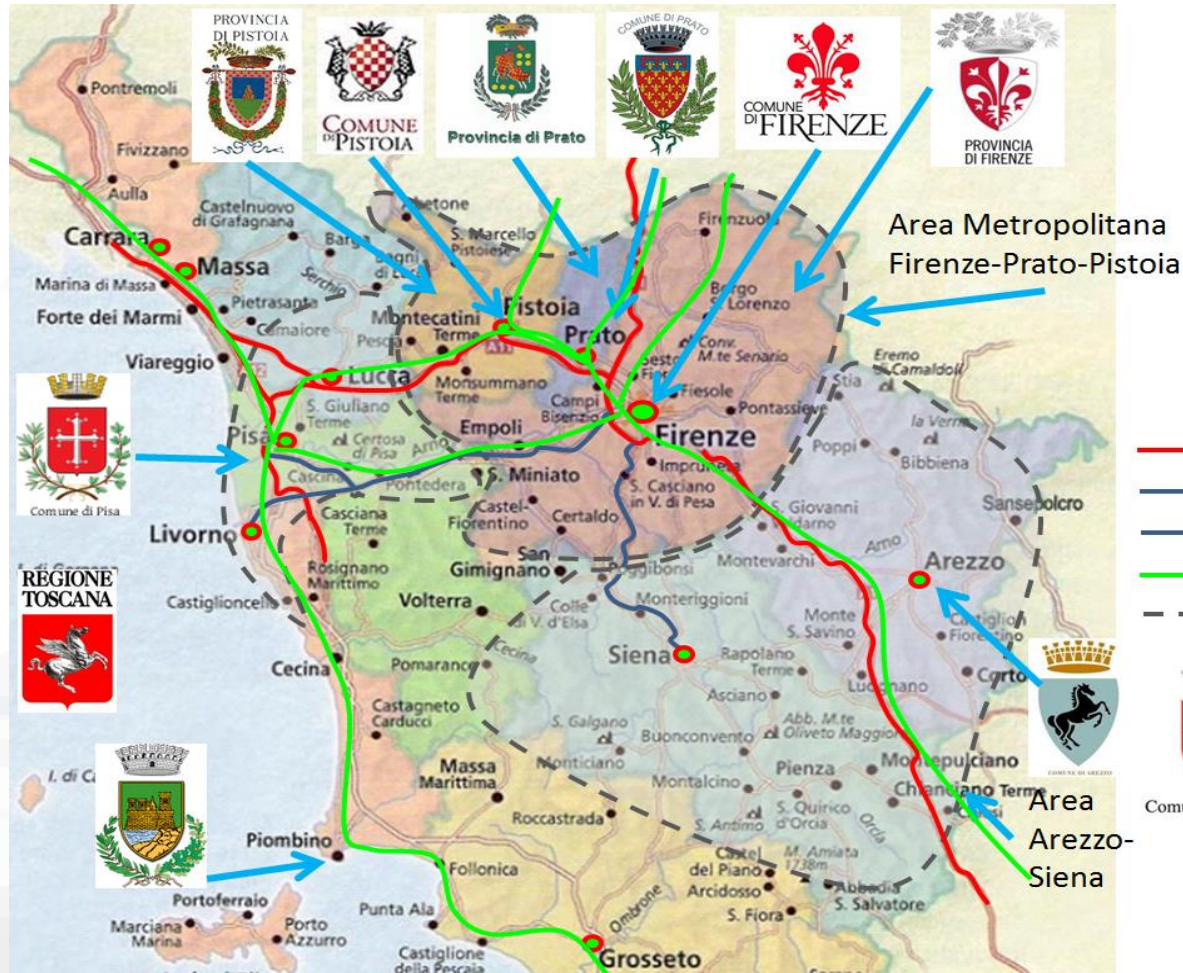
più di 4000 risultati, attivato clustering

Services 16858

Using and Contributing Km4City/Snap4City



- Experimentations and validation in Tuscany
- Integration with present central station and subsystems
- DISIT lab, Università di Firenze, is the tech-scientific coordinator



- Autostrade
- SS Fi-Pi-Li
- SS Fi-Si
- Ferrovie (primarie)
- Aree

ECM; Swarco Mizar;
Inventi In20; Geoin;
QuestIT; Softec; T.I.M.E.;
LiberoLogico; MIDRA
(autostrade, motorola);
ATAF; Tiemme; CTT
Nord; BUSITALIA;
A.T.A.M.; Effective
Knowledge; eWings;
Argos Engineering; Elfi;
Calamai & Agresti;
Project; Negentis



UNIVERSITÀ
DEGLI STUDI
FIRENZE

DINFO
DIPARTIMENTO DI
INGEGNERIA
DELL'INFORMAZIONE

DISIT
DISTRIBUTED SYSTEMS
AND INTERNET
TECHNOLOGIES LAB

Sii-Mobility



MINISTERO DELL'ISTRUZIONE DELL'UNIVERSITÀ E DELLA RICERCA



<http://www.Sii-Mobility.org>

Commenti dei cittadini,
Social Media



AVM trasporto
Pubblico

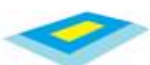


Sensori,
sistema monitoraggio



Sensori su
trasporto Privato

Sensori
Parcheggi



Monitoraggio
traffico, autostrade



Rete
Ferroviaria

Parametri
ambientali

Servizi ed
enti

Ordinanze: eventi,
lavori pubblici, ..

Emergenze,
polizia, 118



UTC



Infomobility



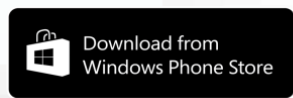
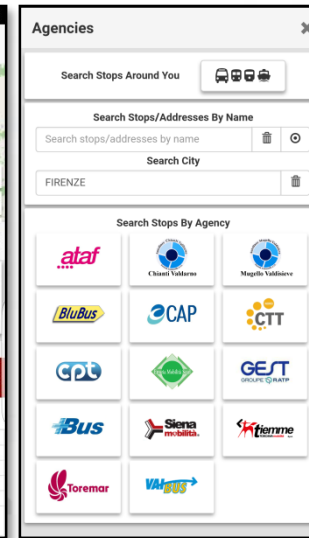
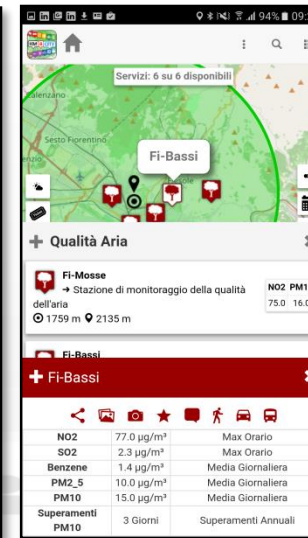
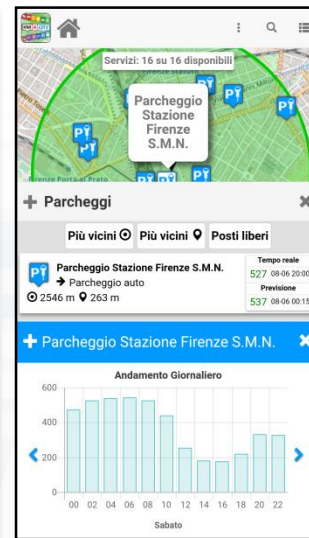
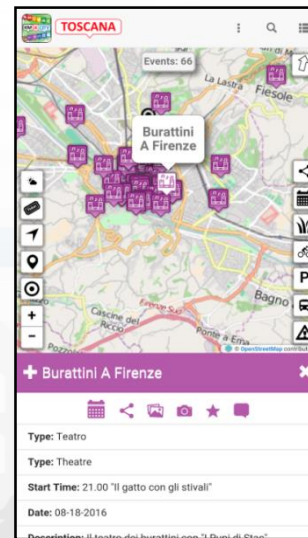
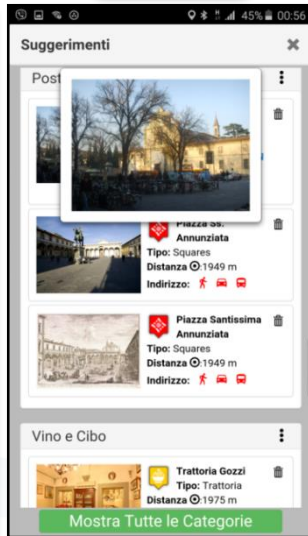
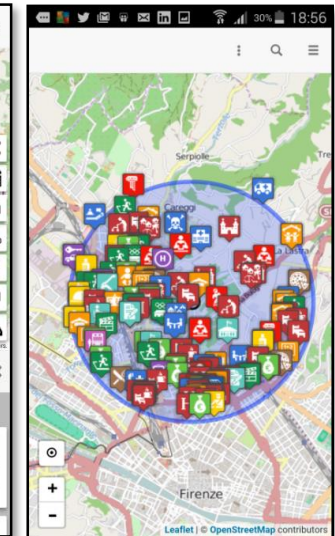
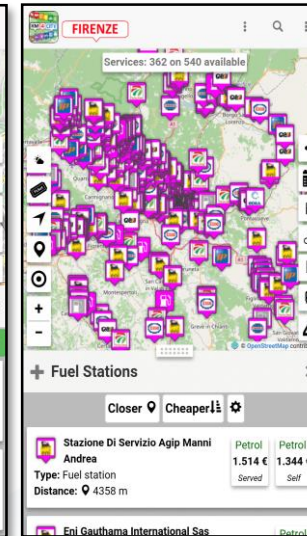
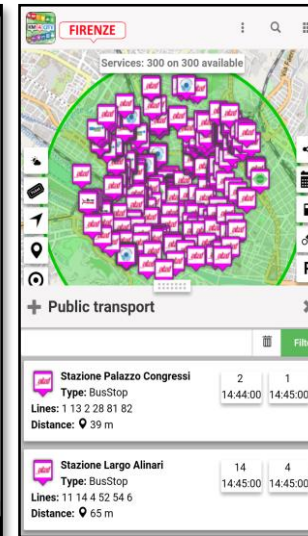
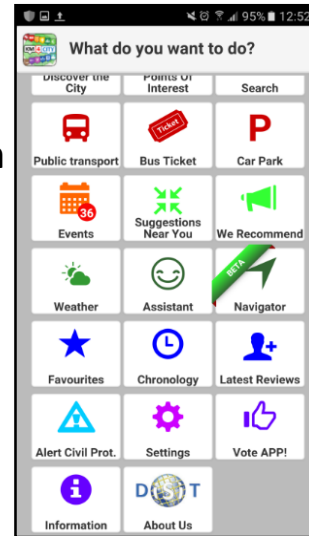
Varchi
Telematici, ZTL



Km4City APP



- Smart Parking, in Tuscany
- Smart First Aid in Tuscany
- Smart Public Transportation in Tuscany
- Smart Fuel pricing in Tuscany
- Bike Sharing in Pisa
- Weather condition in Tuscany
- Pollution and Pollination in Tuscany
- Traffic Sensors in Tuscany
- Smart Routing in Tuscany
- Smart Transportation in Florence
 - Events, traffic, ...
- Entertainment Events in Florence





UNIV
DEGI
FIR



Horizon 2020
European Union Funding
for Research & Innovation

REnaissance of PLaces
with Innovative Citizenship
And Technology

<http://replicate-project.eu/>

- demonstrate Smart City technologies in energy, transport and ICT in districts in:
 - San Sebastian, Florence and Bristol,
 - follower cities of Essen, Nilufer and Lausanne
- Cities are the customer: considering local specificities
- Solutions must be replicable, interoperable and scalable.
 - Integrated Infrastructure: deployment of ICT architecture, from internet of things to applications
 - Low energy districts
 - Urban mobility: sustainable and smart urban services

- ❑1 (coordinator) **FOMENTO DE SAN SEBASTIAN FSS SPAIN**
- ❑2 **AYUNTAMIENTO DE SAN SEBASTIAN SAN SEBASTIAN SPAIN**
- ❑3 **COMUNE DI FLORENCE FLORENCE ITALY**
- ❑4 **BRISTOL COUNCIL BRISTOL UNITED KINGDOM**
- ❑5 **STADT ESSEN ESSEN GERMANY**
- ❑6 **NILUFER BELEDIYESI NILUFER TURKEY**
- ❑7 **VILLE DE LAUSANNE LAUSANNE SWITZERLAND**
- ❑8 **IKUSI ANGEL IGLESIAS, S.A. IKUSI SPAIN**
- ❑9 **ENDESA ENERGÍA, S.A. ENDESA SPAIN**
- ❑10 **EUROHELP CONSULTING, S.L. EUROHELP SPAIN**
- ❑11 **ILUMINACION INTELIGENTE LUIX, S.L. LUIX SPAIN**
- ❑12 **FUNDACION TECNALIA RESEARCH & INNOVATION TECNALIA SPAIN**
- ❑13 **EUSKALTEL, S.A. EUSKALTEL SPAIN**
- ❑14 **COMPAÑÍA DEL TRANVÍA DE SAN SEBASTIÁN DBUS SPAIN**
- ❑15 **CONSIGLIO NAZIONALE DELLE RICERCHE CNR ITALY**
- ❑16 **ENEL DISTRIBUZIONE, SPA ENEL ITALY**
- ❑17 **MATHEMA, SRL MATHEMA ITALY**
- ❑18 **SPES CONSULTING SPES ITALY**
- ❑19 **TELECOM ITALIA, SPA TELECOM ITALY**
- ❑20 **UNIVERSITA DEGLI STUDI DI FLORENCE UNIFI ITALY: DINFO.DISIT Lab and DIF**
- ❑21 **THALES ITALIA, SPA THALES ITALY**
- ❑22 **ZABALA INNOVATION CONSULTING ZABALA SPAIN**
- ❑23 **TECHNOMAR TECHNOMAR GERMANY**
- ❑24 **UNIVERSITY OF BRISTOL UOB UNITED KINGDOM**
- ❑25 **UNIVERSITY OF OXFORD UOXF UNITED KINGDOM**
- ❑26 **BRISTOL IS OPEN, LTD BIO UNITED KINGDOM**
- ❑27 **ZEETTA NETWORKS ZEETTA UNITED KINGDOM**
- ❑28 **KNOWLE WEST MEDIA CENTRE, LGB KWMC UNITED KINGDOM**
- ❑29 **TOSHIBA RESEARCH EUROPE, LTD TREL UNITED KINGDOM**
- ❑30 **ROUTE MONKEY, LTD ROUTE MONKEY UNITED KINGDOM**
- ❑31 **ESOTERIX SYSTMES, LTD ESOTERIX UNITED KINGDOM**
- ❑32 **NEC LABORATORIES EUROPE, LTD NEC UNITED KINGDOM**
- ❑33 **COMMONWHEELS CAR CLUB CIC CO-WHEELS UNITED KINGDOM**
- ❑34 **UNIVERSITY OF THE WEST OF ENGLAND UWE UNITED KINGDOM**
- ❑35 **ESADE BUSINESS SCHOOL ESADE SPAIN**
- ❑36 **SISTELEC SOLUCIONES DE TELECOMUNICACION, S.L. SISTELEC SPAIN**



Horizon 2020
European Union Funding
for Research & Innovation

<http://www.resolute-eu.org>

- Develop European Resilience Management Guidelines (ERMG)
 - Develop a conceptual framework for creating/ maintaining Urban Transport Systems
- Enhance resilience through improved support of human decision making processes, particularly by training professionals and civil users on the ERMG and the RESOLUTE system
- Operationalize and validate the ERMG by implementing the RESOLUTE Collaborative Resilience Assessment and Management Support Systems (CRAMSS) for Urban Transport Systems addressing Road and Urban Rail Infrastructures
 - Pilots in Florence and Athens
- Adoption of the ERMG at EU and Associated Countries level

University of Florence: DISIT lab DINFO (Proj coordinator), DISIA and DST	UNIFI	IT
THALES	THALES	IT
ATTIKOMetro	ATTIKO	GR
Comune di Firenze	CDF	IT
Centre for Research and Technology Hellas	CERTH	GR
Fraunhofer-Gesellschaft zur Förderung der angewandten Forschung e.V.	FHG	DE
HUMANIST	HUMANIST	FR
SWARCO Mizar	SWMIZ	IT
Associação para o Desenvolvimento da Investigação no Instituto Superior de Gestão	ADI-ISG	PT
Consorzio Milano Ricerche	CMR	IT

Acknowledgement

- Thanks to the European Commission for founding. All slides reporting logo of **RESOLUTE H2020** are representing tools and research founded by European Commission for the RESOLUTE project. **RESOLUTE** has received funding from the European Research Council (ERC) under the European Union's Horizon 2020 research and innovation programme (grant agreement n° 653460).
- Thanks to the European Commission for founding. All slides reporting logo of **REPLICATE H2020** are representing tools and research founded by European Commission for the REPLICATE project. **REPLICATE** has received funding from the European Research Council (ERC) under the European Union's Horizon 2020 research and innovation programme (grant agreement n° 691735).
- Thanks to the MIUR for co-founding and to the University of Florence and companies involved. All slides reporting logo of **Sii-Mobility** are representing tools and research founded by MIUR for the Sii-Mobility SCN MIUR project.
- Thanks to the European Commission for founding. All slides reporting logo of **Snap4City** <https://www.snap4city.org> of **Select4Cities H2020** are representing tools and research founded by European Commission for the **Select4Cities** project. **Select4Cities** has received funding from the European Research Council (ERC) under the European Union's Horizon 2020 research and innovation programme (grant agreement n° 688196)
- **Km4City** is an open technology exploited by those projects and line of research of DISIT Lab. Some of the innovative solutions and research issues developed into the above mentioned projects are also compliant and contributing to the Km4City approach and thus are contributing to the open Km4City model of DISIT lab.

