

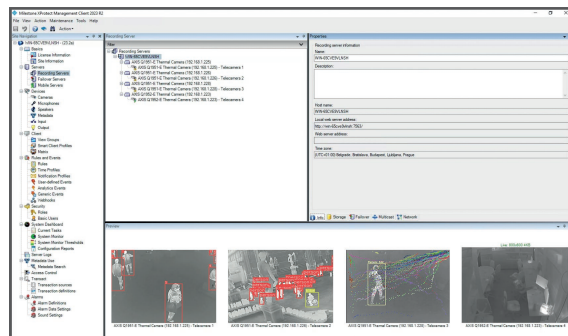


## Snap4City integration with Milestone XProtect®, VMS, Video Management System

Milestone XProtect® is a popular video management software (VMS) solution offered by Milestone Systems. VMS software is used for managing, viewing, and recording video from surveillance cameras and other video sources.

Common features and capabilities in Milestone XProtect VMS includes:

- Camera Management from various manufacturers;
- Continuous or event-based Video Recording;
- Advanced Playback and Forensics;
- Scalability, from a small number of cameras or scale up to manage large-scale surveillance systems with thousands of cameras and multiple locations.
- Mobile Access;
- Integration with a variety of third-party systems and devices;
- User Management;
- Event and Alarm Management;
- Video analytics capabilities for advanced features;
- Centralized Management, for organizations with multiple sites or locations;
- Cybersecurity Features, to protect against unauthorized access and cyber threats;
- Failover and Redundancy, High availability and failover options to ensure continuous operation;
- User interface customization;
- Detailed logs and audit trails.



Keep in mind that the exact features and capabilities may vary depending on the specific edition or version of Milestone XProtect you have, as well as any additional plugins or integrations you might use. To get the most accurate and up-to-date information about Milestone XProtect VMS, it is recommended to visit the official Milestone Systems website or contacting their sales and support teams.

Integrating Milestone VMS (Video Management Software) with Snap4City can offer several benefits for smart city and urban management:

- **Enhanced Security and Surveillance:** Integration of Milestone VMS with Snap4City allows for seamless video surveillance within the smart city infrastructure. This can enhance security and safety by providing real-time monitoring of critical areas, such as public spaces, transportation hubs, and government buildings.
- **Event Correlation:** By combining video data from Milestone VMS with data from various IoT sensors and devices in the Snap4City platform, you can correlate events and incidents. For example, video footage can be linked to sensor data to provide context in case of emergencies or incidents.
- **Data Visualization:** Snap4City offers advanced data visualization tools, and when integrated with Milestone VMS, it can display live video feeds alongside other data layers, such as environmental data, traffic flow information, and more. This helps city administrators make informed decisions.
- **Traffic Management:** The integration can assist in traffic management and optimization. Video feeds from traffic cameras can be analysed to monitor traffic flow, detect congestion, and even provide real-time updates to commuters.
- **Emergency Response:** In case of emergencies, such as accidents, fires, or security breaches, the integration allows for faster response times by providing real-time video feeds and situational awareness to first responders and emergency services.
- **Data Analytics:** Snap4City's analytics capabilities can be extended to video data from Milestone VMS. This enables the identification of trends, patterns, and anomalies in video footage, contributing to more proactive decision-making.
- **Smart Parking:** Integration can help manage parking facilities more efficiently by using video analytics to monitor parking spaces, detect violations, and guide drivers to available parking spots.
- **Public Safety:** It can improve public safety by enabling the detection of incidents such as vandalism, accidents, or overcrowding in public spaces. This information can be used to deploy resources effectively.

SNAP4CITY  
INTEGRATION  
WITH VIDEO  
MANAGEMENT  
SYSTEM

SOLUTIONS

SMART  
APPLICATION  
TO MONITOR  
AND CONTROL  
SURVEILLANCE  
CAMERAS

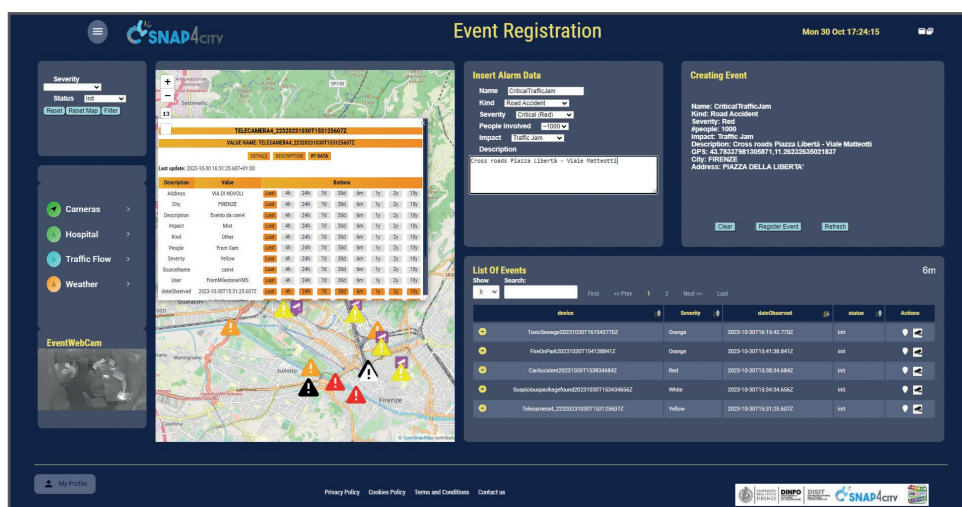
- **Environmental Monitoring:** Combining video data with environmental sensor data allows for the monitoring of pollution levels, weather conditions, and other environmental factors that can impact the quality of life in a city.
- **Resource Optimization:** By integrating video surveillance with other data sources, cities can optimize resource allocation, whether it's for law enforcement, traffic management, or maintenance of city infrastructure.
- **Comprehensive Dashboard:** Snap4City often provides a unified dashboard for city management, which can include real-time video feeds alongside other data layers, making it easier for city officials to monitor and respond to events.

Specific benefits of integrating Milestone VMS with Snap4City may vary depending on the use case and the extent of integration. It's essential to work closely with both Milestone Systems and Snap4City to tailor the integration to the specific needs and goals of your smart city or urban management project.

The actual integration of Snap4City with Milestone is performed by means of a Node-RED library of Snap4City. The Snap4City Node-RED library can be used even without the usage of Snap4City tools. It allows to:

- send events from Node-RED to VMS X protect of Milestones
- receive events from VMS X protect of Milestones into Node-RED

The library can be installed on AXIS camera, on Windows, Linux, Raspberry Pi, etc., without the installation of .NET.



The Snap4City platform can be integrated with Milestone VMS to create a more complete and integrated surveillance and security system. Here are some examples of how the Snap4City platform could be useful in combination with Milestone VMS:

- **Traffic monitoring and management:** The Snap4City platform can be used to integrate traffic information from Milestone VMS security cameras and display it on an interactive map. This allows you to monitor traffic in real time and manage it more effectively.
- **Incident Management:** In the event of road accidents, the Snap4City platform can be used to integrate information from Milestone VMS security cameras with other data sources, such as traffic data and weather conditions. This allows you to coordinate emergency resources more quickly and improve incident management.
- **Public Safety:** The Snap4City platform can be used to integrate information from Milestone VMS security cameras with other data sources, such as weather data and social media data. This allows you to monitor public events in real time and improve public safety.
- **Parking Management:** The Snap4City platform can be used to integrate information from Milestone VMS security cameras with other data sources, such as traffic data and parking data. This allows parking to be managed more efficiently and improves the availability of parking for citizens.

In summary, the Snap4City platform can be used in combination with Milestone VMS to create a more complete and integrated surveillance and security system. The platform allows information from different sources to be integrated and displayed on an interactive map, improving traffic management, public safety and parking management, among other things.



**Extended version accessible from:** <https://www.snap4city.org/966>  
**Contact:** <https://www.snap4city.org>  
**Partners:** Milestone Systems (<https://www.milestonesys.com/>)

NOITOTOS